

CAT®

TRACK LOADERS



953 | 963 | 973



CAT[®] 953 | 963 | 973

TRACK LOADERS

ULTIMATE VERSATILITY

Save money and transport time with one rugged machine that does it all – land clearing, digging, grading, truck loading, slope work and more. Crawler loaders give you lower ground pressure and better traction so you can start the job sooner, and work longer, in all kinds of underfoot conditions. Cat[®] Track Loaders give you all this, plus outstanding performance and fuel efficiency.



THE MOST VERSATILE MACHINE ON THE JOBSITE

Your track loader can be the first machine on the job and the last to leave – no other single machine can do as many different tasks as a crawler loader. Traction and flotation mean you can work when and where others cannot, such as in wet, soft or rocky conditions. And when your job has special requirements, there is a purpose-built track loader that's up to the challenge:

- + LOW GROUND PRESSURE
- + WASTE HANDLER
- + SHIP HOLD
- + STEEL MILL



ONE MACHINE, MANY JOBS

Transport, operate and maintain just one machine to dig, load, carry, fill and more. The Fusion™ quick coupler adds versatility with fast attachment changes.

UP TO 10% FUEL SAVINGS

A more efficient engine, along with Automatic, Eco and Power modes, help you match performance to the job and optimize fuel efficiency. Remote services and machine features help you save time and money on your service and maintenance.

MORE PRODUCTIVITY

Boost your productivity up to 20% with an optional Performance Series bucket. Cat Payload* technology helps optimize bucket loading for faster cycle times.

Comparisons to 953K/963K/973K.

**Not for legal trade.*



FAST START

Remove trees, pick up debris, load it up to be carried away. Use the optional ripper to prepare hard ground. Excavate material, remove topsoil, stockpile. Track loaders give you the traction you need to work on uneven ground and poor underfoot conditions.

STEADY PACE

Dig foundations, load trucks, grade material and carry it away. Quickly move pipe and other materials around the jobsite. Backfill trenches and around foundations. Build and finish slopes up to 45°.

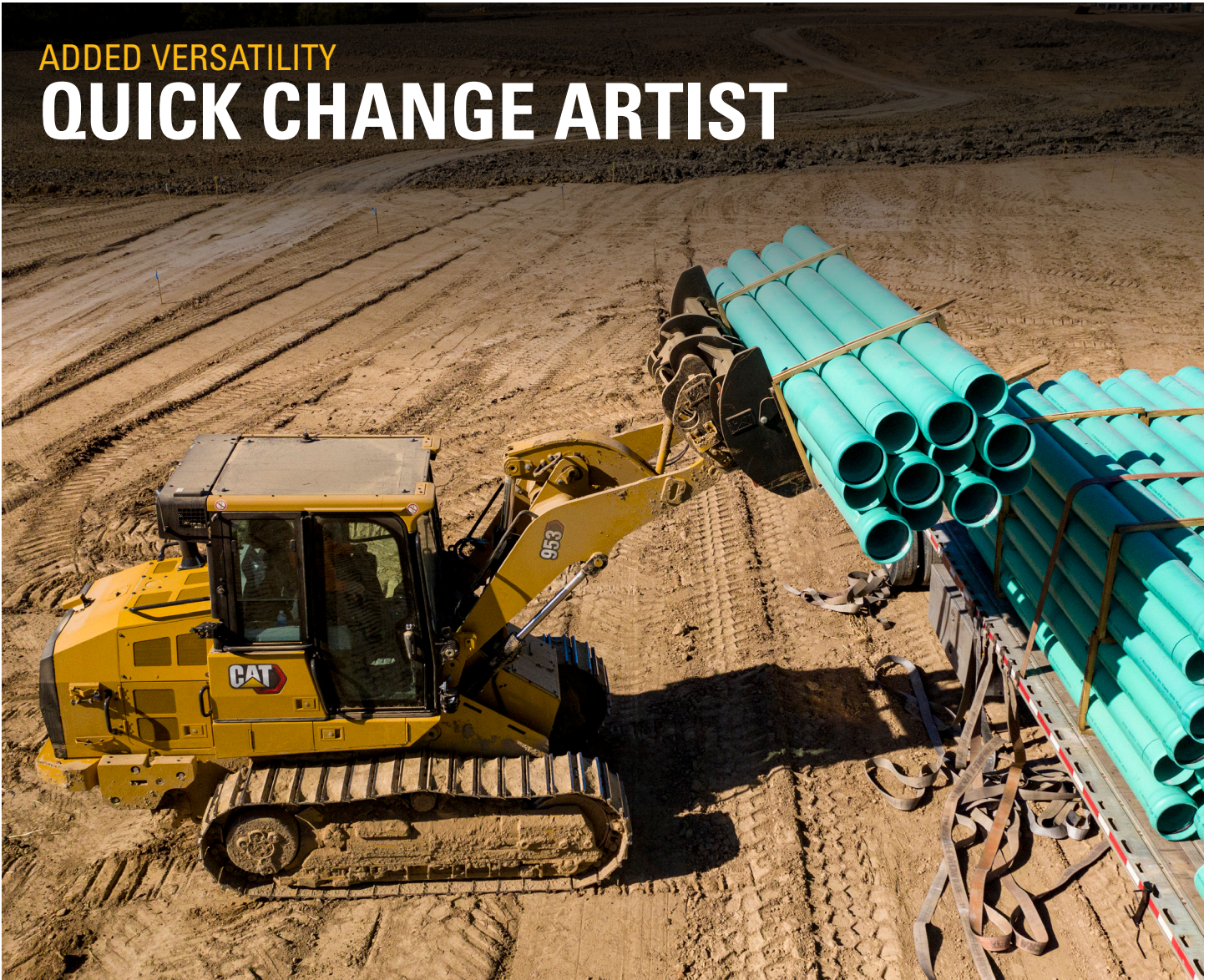
STRONG FINISH

When the job is done and all the other machines head home, your track loader can stick around to clean up rock, debris and dirt. You can even use it on finishing touches like building ponds and retaining walls or installing hardscape.



ADDED VERSATILITY

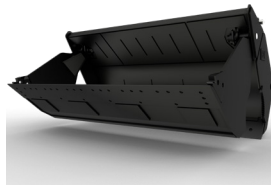
QUICK CHANGE ARTIST



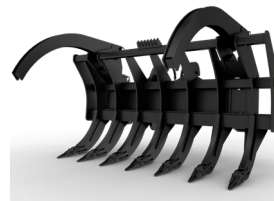
FUSION QUICK COUPLER



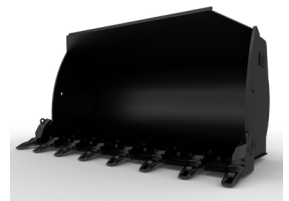
PALLET FORKS



MULTI-PURPOSE BUCKET



RAKE



GENERAL PURPOSE BUCKET

QUICK ATTACHMENT CHANGES

Fusion Quick Coupler option lets you make fast attachment changes with a wide range of tools like forks, buckets, etc. from wheel loaders and other Fusion-compatible machines. Ask your Cat dealer about the range of tools available for the work you do.



SAVE FUEL, SAVE MONEY

Auto mode matches performance to the job so you get the engine power you need but use less fuel when doing lighter work. Save up to 10% on fuel compared to the K Series and up to 25% compared to the D Series. Eco mode provides added fuel savings in lighter-duty applications. Power mode delivers full power at all times so you can feel ready to take on the toughest applications.



BOOST YOUR PRODUCTIVITY

Get more work done in less time with the Performance Series bucket, designed to increase your productivity by up to 20% compared to a General Purpose bucket.



SMOOTH OPERATOR

Smooth response gives you more precise control of the machine and implements. This makes overall operation easier and lets you take on detailed tasks.



ADVANSYS™ ADVANTAGE

Buckets come from the factory with Advansys™ bucket tips/adaptor/locking system. Advansys tips are built to give you maximum productivity and the lowest bucket lifecycle cost for your toughest applications. Hammerless retention system means safe, fast removal and installation without special tools.



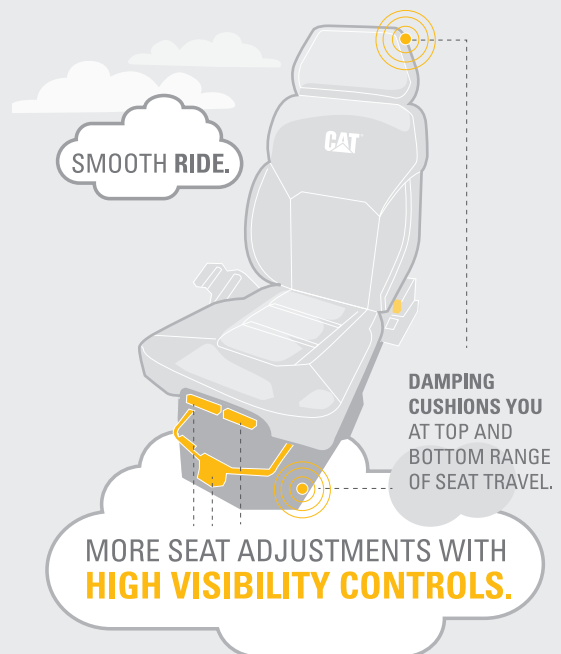
TOUGH ON THE JOB
EASIER ON OPERATORS

Quiet cab offers operator comfort and plenty of storage.

- Intuitive 10-inch (254 mm) touchscreen dash display.
- Standard high-definition rearview camera shows prominently in the main display.
- Select joystick or V-lever and pedal steering for transmission controls and either joystick or 2-lever implement controls.
- Smooth implement and steering response, plus improved steering performance, provide easy, precise operation. Set your implement response – fine, normal, coarse – to match preference or application.
- More heating/cooling airflow in the cab means greater comfort.
- Added lighting packages illuminate your work area.

Next-generation seat gives you a more comfortable ride and has dynamic end dampers to cushion you at the top and bottom range of seat travel. Enjoy more adjustment features, 4-point restraint compatibility and heated or heated/cooled options.

EASY CHAIR





HELPING HANDS FOR EASE OF OPERATION

CAT PAYLOAD/ADVANCED PAYLOAD*

Cat Payload technology delivers precise bucket load information with on-the-go weighing, which helps prevent over- or under-loading. More accurate loading reduces cycle times to help save time, labor and fuel costs. Upgrade to Advanced Payload for features that enable more automation, customization and tracking.

EASIER TRUCK LOADING

Preset your repetitive lift, lower, rack, dump and float functions to make jobs like truck loading easier. Set each function separately with the simple push of a button in the cab.

**Not legal for trade.*

SIMPLIFY SLOPE WORK

Slope Indicate shows machine mainfall and cross slope right on the display, without added hardware or software. Slope Indicate does not control the attachment, but it does provide a useful reference when doing jobs like cutting drainage, working on road embankments or grading on slopes.

THE RIGHT ANGLE

An icon on the display shows your bucket angle relative to the plane of the tracks, helping you get the desired bucket position more easily. Zero out the reading with the push of a button if you change work tool attachments.

LESS MAINTENANCE TIME

MORE TIME ON THE JOB

EASY ACCESS

The cab tilts 30° and locks in place with a bar, giving you convenient access for maintenance and repairs. Optional extended service package adds a manual hydraulic pump so you can easily tilt the cab in the field without a crane.

WHEN UPTIME COUNTS

Cat track loaders are designed to help you take care of routine maintenance and get back to work.

- + Grouped service points located behind large access doors; daily grease points in easy reach at ground level.
- + Easy ground-level access to battery disconnect, underhood light switch, access lighting and main switch.
- + Engine air filter is easier to service.
- + Air cleaner is easier to service and captures more debris for improved engine reliability.
- + Implement Return oil filter helps protect system from contamination.
- + Handy bracket holds a shovel for quick undercarriage clean-out.
- + Diesel Particulate Filter in the Clean Emissions Module (when equipped) designed to work for the life of the engine without needing to clean or replace the filter.

COOL AND CONVENIENT

Hydraulic demand fan reduces speed in cooler conditions to conserve power, save fuel and decrease sound levels. It's designed to reduce plugging, and fold-down access provides easy clean-out. Optional reversing fan is available for high debris conditions.



CAT EQUIPMENT MANAGEMENT TAKES THE GUESSWORK OUT OF MANAGING YOUR EQUIPMENT

Getting the most out of your equipment requires hundreds of decisions, every day. Where should assets be deployed? How can we solve a production bottleneck? What can we do to reduce fuel costs? Cat Equipment Management gives you access to all the data you need to keep your equipment on the job site and earning money. You can track equipment location and hours, monitor machine use and health, then take informed action that will keep your operation running smoothly, efficiently and profitably.

CAT PRODUCT LINK™

Product Link collects data automatically and accurately from your assets – any type and any brand. Information such as location, hours, fuel usage, productivity, idle time, maintenance alerts, diagnostic codes and machine health can be viewed online through web and mobile applications.



VISIONLINK®

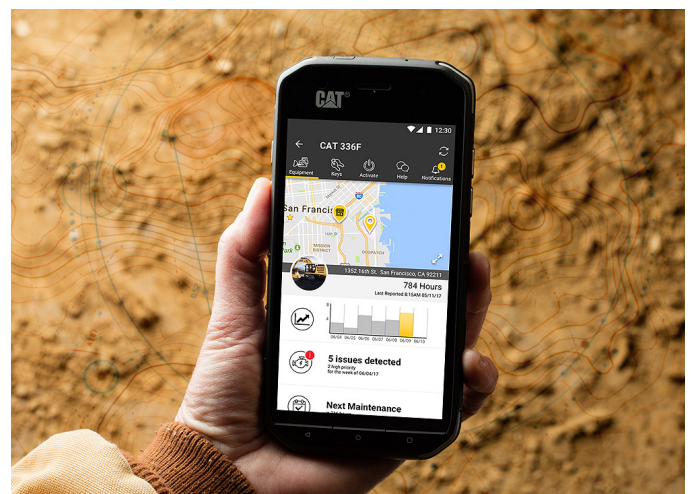
Access information anytime, anywhere with VisionLink – and use it to make informed decisions that boost productivity, lower costs, simplify maintenance and improve safety and security on your jobsite. With different subscription level options, your Cat dealer can help you configure exactly what you need to connect your fleet and manage your business, without paying for extras you don't want. Subscriptions are available with cellular or satellite reporting or both.



REMOTE SERVICES

The Cat App helps you manage your assets – at any time – right from your smartphone. See fleet location and hours, get critical required maintenance alerts and even request service from your local Cat dealer.

- + **Remote Flash** – get software updates to one or more machines remotely. You just need a designated person close to the machine to initiate/confirm the update.
- + **Operator ID** lets you track machine operation by individual operator using the main display and Product Link.



WORK MORE SAFELY

LOOKING OUT FOR YOU

Cat track loaders are designed to help operators work more safely. Ergonomics, a quiet engine and low-effort controls help lessen fatigue so operators are better able to remain fresh and focused.

BUCKLE UP

Seat belt indicator gives an alarm and registers fault code through Product Link if the operator fails to buckle up, enhancing jobsite safety.

EASY TRANSPORT

Added machine tie downs at the front and rear of the machine give you a safe way to secure the machine during shipment. Please refer to the Operating and Maintenance Manual for details.



BETTER VIEW

Standard rear-vision camera, located right in the main dash display, makes it easier to see people or obstacles behind the machine.

BRIGHTER LIGHT

Illuminate your worksite with LED lighting and optional beacons. Added lights at the bottom of the cab shine on the track, and fender LED lights help light up the work area in low light conditions.



ON AND OFF WITH EASE

Cat track loaders are designed with operator safety in mind. Grab handles and steps are located at both the front and back of the machine so you can climb on and off more easily.

PURPOSE-BUILT TO TAKE ON THE TRASH

Take on a variety of tasks in a landfill or transfer station. Push, shred and compact waste. Create and maintain access, dig cells and work cover material.



READY TO WORK

Waste Handler has factory-equipped guarding and seals to help protect the machine, undercarriage and cooling system from impact and airborne debris. Choice of buckets and track shoes allow you to further optimize the machine for the job.

CLEANOUT AND COMPACTION

Enhanced Cleaning package features a wide gauge undercarriage and standard width track to help reduce debris buildup and make cleaning easier. Added weight, plus narrower track shoe, increases ground pressure for greater compaction.

GO TO EXTREMES

For tougher tasks like demolition and transfer stations, choose an Extreme Service package with even more guarding and screens to help protect the windshield and operator from breakage and debris.

Extreme Service available on 963/973.

CAPABLE SPECIALISTS

EQUIPPED FOR YOUR JOB

Track loaders are second to none when it comes to versatility, agility and the ability to work in tight spaces. And when the job has specific demands, you can equip your loader from the factory to take on the challenge.



LOW GROUND PRESSURE

When you need even more flotation and traction, or are working in more sensitive ground conditions, choose a Low Ground Pressure (LGP) loader. The wider tracks provide added ground contact area, giving you lower ground pressure and better flotation. The wider tracks also add to machine stability for slope work.



SHIP SHAPE

Traction, high reach and machine balance make track loaders ideal for working in ship holds and port handling duties. Work with ease in tight spaces and on uneven ground. Specialized guarding and seals help protect the machine, while attachments like coal buckets and trim blades help you get the job done.



HANDLE THE HEAT

Factory designed and installed features equip your loader for the extreme heat and harsh conditions of steel mill work. The 953/963 Partial Steel Mill package has a Steel Mill cab and undercarriage, and adds heat resistant features to help withstand high temperatures. The 973 full Steel Mill package also has an insulated steel fuel tank and added insulation throughout the machine, making it suitable for handling slag.

Please refer to the OMM for steel mill operation recommendations.

TECHNICAL SPECIFICATIONS

For complete specifications, dimensions and configurations, please refer to the Technical Specifications for each model available at dealer.cat.com.

	953		963		973	
Build Number			12A			
Engine Model	Cat® C7.1		Cat C7.1		Cat C9.3B	
Emissions	Meets U.S. EPA Tier 4 Final, EU Stage V, Korea Stage V, China Nonroad Stage IV, Japan 2014 emission standards or Eurasian Economic Union Stage IIIA, UN ECE R96 Stage IIIA emission standards, equivalent to U.S. EPA Tier 3/EU Stage IIIA.					
Net Power (1,800 rpm)						
ISO 9249/SAEJ1349	119 kW	160 hp	151 kW	202 hp	205 kW	275 hp
ISO 9249 (DIN)	162 mhp		204 mhp		279 mhp	
Fuel Tank	265 L	70 gal	320 L	84.5 gal	450 L	119 gal
DEF Tank (when equipped)	16 L	4.2 gal	16 L	4.2 gal	35 L	9.2 gal
Operating Weights*						
Standard	15 958 kg	35,181 lb	20 358 kg	44,881 lb	29 892 kg	65,901 lb
Low Ground Pressure (LGP)	17 261 kg	38,055 lb	22 762 kg	50,181 lb	32 304 kg	71,218 lb
Overall Machine Width/Without Bucket						
Standard Tracks	2316 mm	91.2 in	2400 mm	94.5 in	2835 mm	111.6 in
Narrow Tracks	2216 mm	87.2 in	2300 mm	90.5 in	2710 mm	106.7 in
Wide Tracks	2936 mm	115.6 in	2900 mm	114.2 in	3145 mm	123.8 in
Machine Height to Top of Cab	3156 mm	124.2 in	3325 mm	130.9 in	3510 mm	138.2 in
Machine Length to Front of Tracks	6378 mm	251.1 in	7001 mm	275.6 in	5318 mm	209.4 in
Hinge Pin Height at Maximum Lift	3608 mm	142.1 in	3940 mm	155.1 in	4218 mm	166.1 in
Turning Radius	3.6 m	141.7 in	4.0 m	157.5 in	5.2 m	220 in
Ground Pressure – Standard Shoe	66 kPa	10 psi	63 kPa	9.1 psi	65.8 kPa	9.5 psi
Ground Pressure – LGP	43 kPa	6 psi	48.5 kPa	7 psi	57.9 kPa	8.4 psi

*For machines without aftertreatment, subtract 287 kg/632 lbs.

BUCKETS				
	Capacity		Width	
953				
General Purpose	1.8 m ³	2.4 yd ³	2485 mm	97.8 in
Performance Series	2.1 m ³	2.7 yd ³	2536 mm	99.8 in
General Purpose Fusion	1.8 m ³	2.4 yd ³	2536 mm	99.8 in
963				
General Purpose	2.5 m ³	3.2 yd ³	2571 mm	101.2 in
Performance Series	2.8 m ³	3.7 yd ³	2671 mm	105.2 in
General Purpose Fusion	2.5 m ³	3.2 yd ³	2571 mm	101.2 in
973				
General Purpose	3.2 m ³	4.2 yd ³	3010 mm	118.5 in
Performance Series	3.8 m ³	5.0 yd ³	3015 mm	118.7 in
General Purpose Fusion	3.2 m ³	4.2 yd ³	3010 mm	118.5 in

All buckets (excluding Slag and General Purpose with full bolted cutting edge) feature Advansys Ground Engaging Tools. Please consult with your Cat dealer to learn about the full range of available buckets and work tool attachments for your track loader.

- The net power advertised is the power available at the flywheel when the engine is equipped with fan running up to maximum speed, alternator, air cleaner and aftertreatment (when equipped).
 - Advertised power is tested per the specified standard in effect at the time of manufacture.
 - Cat U.S. EPA Tier 4 Final, EU Stage V, Korea Stage V, China Nonroad Stage IV, Japan 2014 engines are required to use ULSD (ultra-low sulfur diesel fuel with 15 ppm of sulfur or less) or ULSD blended with the following lower-carbon intensity fuels*** up to:
 - 20% biodiesel FAME (fatty acid methyl ester)*
 - 100% renewable diesel, HVO (hydrotreated vegetable oil) and GTL (gas-to-liquid) fuels
 - Cat engines meeting Eurasian Economic Union Stage IIIA, UN ECE R96 Stage IIIA emission standards, equivalent to U.S. EPA Tier 3/ EU Stage IIIA are compatible with diesel fuel blended with the following lower-carbon intensity fuels*** up to:
 - 100% biodiesel FAME (fatty acid methyl ester)**
 - 100% renewable diesel, HVO (hydrotreated vegetable oil) and GTL (gas-to-liquid) fuels
- Refer to guidelines for successful application. Please consult your Cat dealer or "Caterpillar Machine Fluids Recommendations" (SEBU6250) for details.

* Engines with no aftertreatment devices can use higher blends, up to 100% biodiesel (for use of blends higher than 20% biodiesel, consult your Cat dealer).

** For use of blends higher than 20% biodiesel, consult your Cat dealer.

*** Lower-carbon intensity fuels do not significantly reduce GHGs at the tailpipe.

STANDARD & OPTIONAL EQUIPMENT

Standard and optional equipment may vary. Consult your Cat dealer for details.

POWER TRAIN	STANDARD	OPTIONAL
Cat diesel engine	•	
Load sensing implement pump	•	
Modular cooling system	•	
OPERATOR ENVIRONMENT	STANDARD	OPTIONAL
Standard cab – pressurized ROPS/FOPS	•	
Deluxe cab		•
Steel Mill cab		•
Full-color 10-in. (254 mm) liquid crystal touchscreen display	•	
Integrated rearview HD camera	•	
Joystick or V-lever-and-pedal steering controls		•
Joystick or 2-lever implement controls		•
Comfort seat	•	
Premium seat		•
Deluxe seat		•
Adjustable armrests	•	
Radio ready	•	
Radio AM/FM Bluetooth®		•
Radio AM/FM/DAB+ Bluetooth		•
Radio AM/FM/Sirius XM Bluetooth		•
Communication radio ready - FM		•
12V power outlet and 5V USB port	•	
Heat/air conditioning	•	
Storage areas throughout cab	•	
Grab handle on dash	•	
Lights – 4 halogen	•	
Lights – 8 LED		•
Lights – 2 LED front/bottom of cab, access light		•
LED flashing beacon		•
CAT TECHNOLOGY	STANDARD	OPTIONAL
Slope Indicate	•	
Bucket angle indicator	•	
Cat Payload/Advanced Payload		•
Product Link™ ready	•	
Product Link cellular		•
Product Link dual (cellular/satellite)		•
Remote flash/troubleshoot	•	

BUCKETS	STANDARD	OPTIONAL
Fusion™ quick coupler		•
General Purpose bucket		•
Multi-purpose bucket		•
Performance bucket		•
Landfill bucket		•
Slag bucket		973
UNDERCARRIAGE	STANDARD	OPTIONAL
Heavy Duty Extended Life (HDXL) undercarriage	973	953/963
Cat Abrasion undercarriage		953/963
Oscillating track roller frames	•	
Waste or Wide Gauge undercarriage		•
Steel mill undercarriage		•
SERVICE AND MAINTENANCE	STANDARD	OPTIONAL
Hinged radiator guard and swing out fan	•	
Ecology drains	•	
High-speed oil change		•
4 x 2 Easy tie-down points on chassis	•	
Shovel holder		•
Ground-level service center	•	
Hydraulic tilt cab		•
Metallic fuel tank	973	963
Fast fuel fill		•
Refueling pump		•
Hydraulic demand fan		•
Hydraulic demand fan, reversing		•
Underhood work light	973	953/963
ATTACHMENTS	STANDARD	OPTIONAL
Ripper-ready rear hydraulics		•
Multi-shank ripper		•
Bumper		•
Counterweights		•
Ripper hitch		•
Striker bar box		•
FEATURE PACKAGES	STANDARD	OPTIONAL
Low ground pressure (LGP)		•
Waste handler		•
Waste handler - enhanced cleaning		•
Waste handler - extreme service/demolition		963/973
Ship hold		•
Partial steel mill		953/963
Steel mill		973

Not all features are available in all regions. Please check with your local Cat dealer for specific offering availability in your area.
For additional information, refer to the Technical Specifications brochures available at www.cat.com or your Cat dealer.

For more complete information on Cat products, dealer services, and industry solutions, visit us on the web at www.cat.com.

VisionLink is a trademark of Caterpillar Inc., registered in the United States and in other countries.

Materials and specifications are subject to change without notice. Featured machines in photos may include additional equipment. See your Cat dealer for available options.

©2023 Caterpillar. All Rights Reserved. CAT, CATERPILLAR, LET'S DO THE WORK, their respective logos, Product Link, Fusion, "Caterpillar Corporate Yellow", the "Power Edge" and Cat "Modern Hex" trade dress as well as corporate and product identity used herein, are trademarks of Caterpillar and may not be used without permission.

www.cat.com www.caterpillar.com

Based on the Labor, Safety and Health Laws in Japan, employer of small construction equipment are required to provide specific training for all operators on machines with machine weight less than 3 metric tons. For machines greater than 3 metric tons, operator needs to obtain operator license certification from a government-approved registered training school.



オフロード法2014年
基準適合

AEXQ3615-00
Build Number: 12A
(Global)

